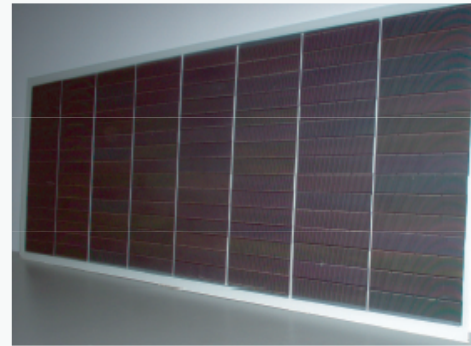
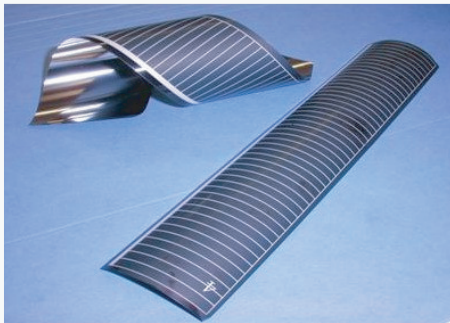


Thin Film Copper Indium Diselenide(CIGS) Solar Module



CSE's CIGS modules offer the durability of an industrial module with the great performance of thin film. The CS-CIGS60-T and CS-CIGS50-T modules are completely ready for mounting. All components, from frame to junction box are designed for easy and inexpensive system integration.

Typical 12V applications are water pumping, lighting, traffic systems, telecommunication, mini home systems, consumer and leisure products. The proven encapsulation ensures high resistance against UV, temperature and weather fluctuations, even in most extreme conditions. The torsion-proof aluminum dished frame with integrated screw less corner links offers optimal protection against wear and damage. The low iron tempered glass ensures high performance, high mechanical strength and long life.

All modules have a variable circuiting junction box. The oblong holes in the aluminum frame allow easy and universal mounting.

Rated Power	Pmp	60 Watt	50 Watt
Rated Voltage	Vmp	17.9V	17.6V
Rated current	Imp	3.3A	2.84A
Open Circuit Voltage	Voc	22.0V	22.5V
Short Circuit Current	Ish	3.5A	3.13A
Temp Coefficients Power & Voltage	---	-0.5%/0C	-0.5%/0C
Dimensions	mm (in)	559 x 1557 x 34, (21.9 x 61.3 x 1.3)	559 x 1557 x 34, (21.9 x 61.3 x 1.3)
Weight	kg (lbs)	13.1 (29lbs)	13.1 (29lbs)
Performance Warranty	---	20 years	20 years